

What's New in IIB V10

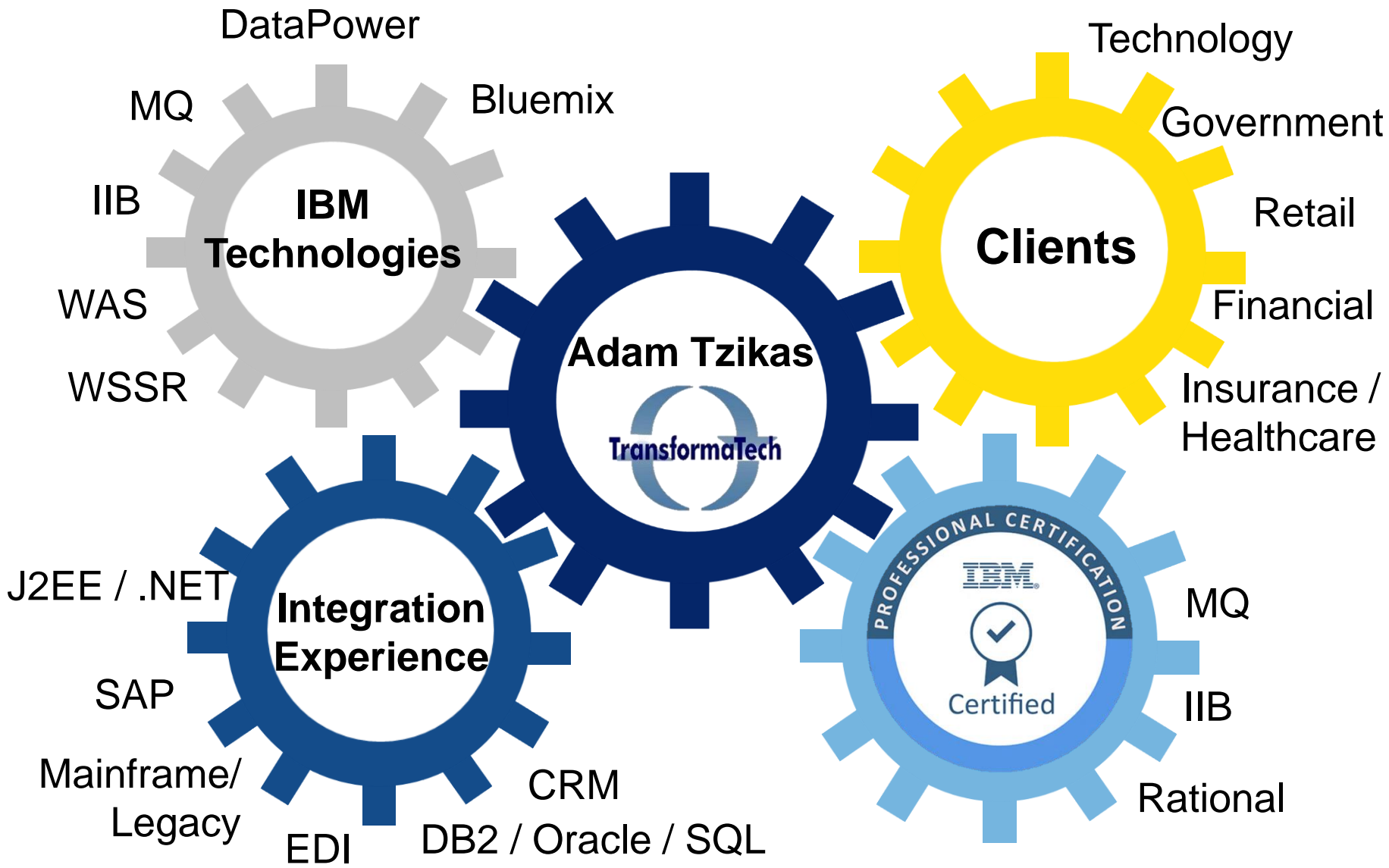
Adam Tzikas

**Senior Integration Consultant,
TransformaTech, Inc**

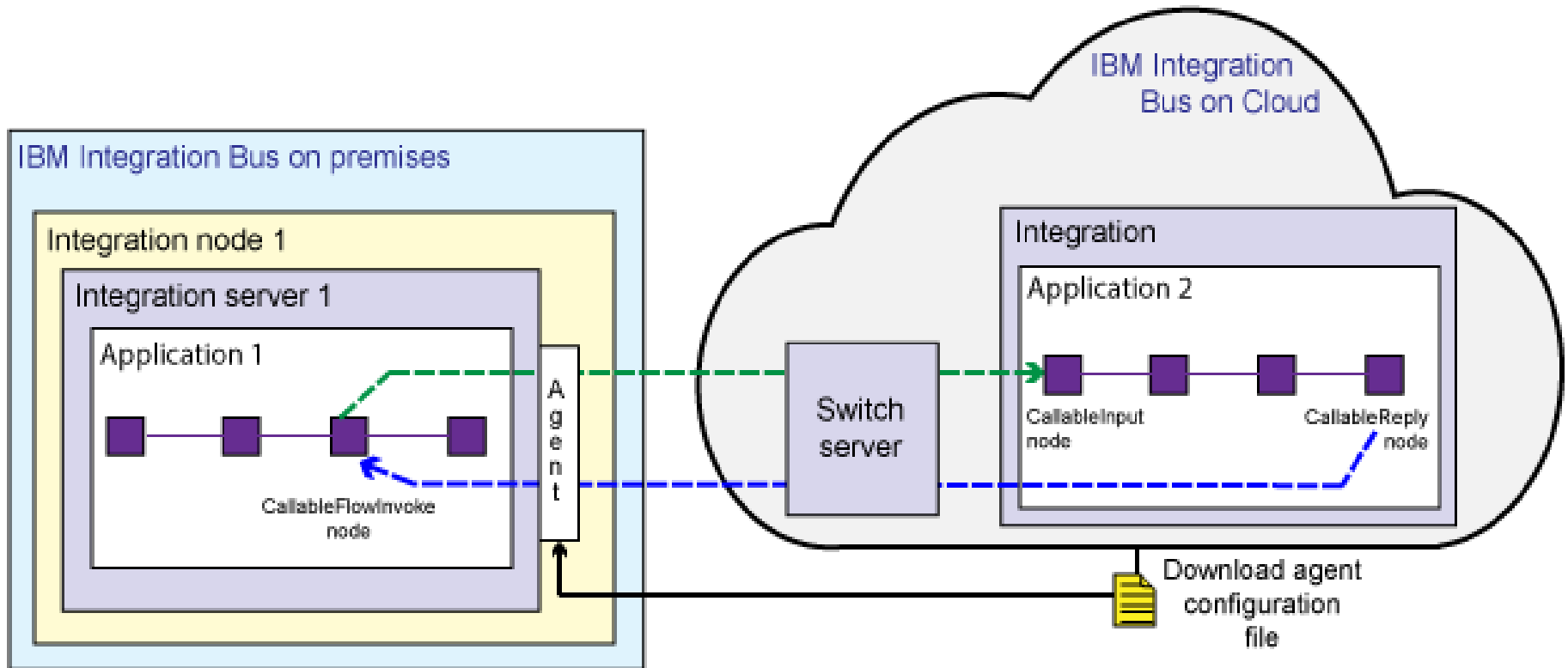
www.TransformaTech.com

Agenda

- **Who Am I?**
- **Cloud**
- **Simplicity**
- **External Connectivity**
- **Graphical Mapping**
- **More Additions**



Cloud

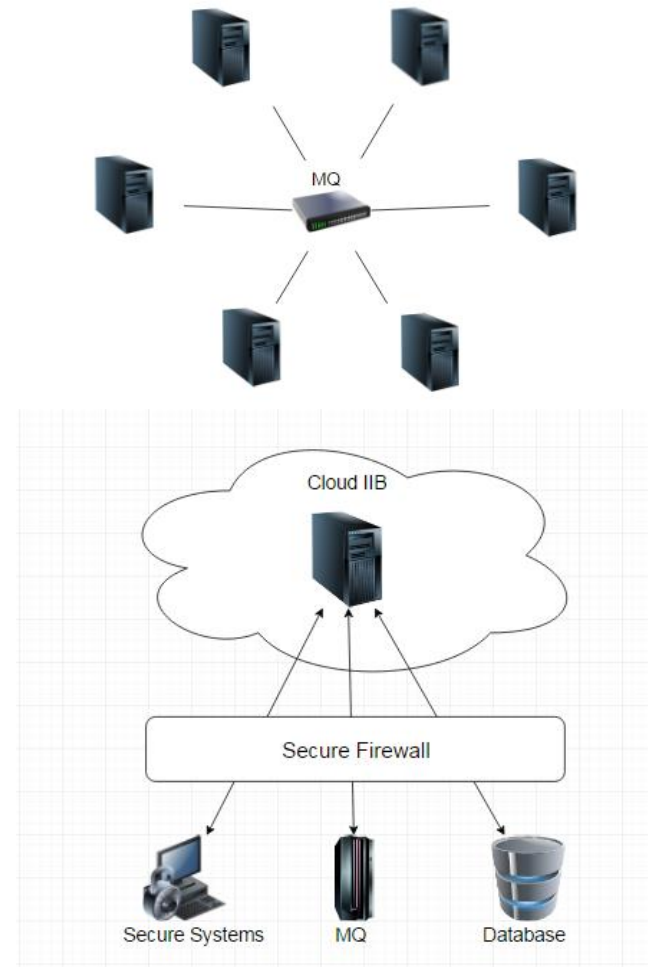


Simplicity

- **Simple Install**
- **WebSphere MQ Not a Prerequisite**
 - ▶ Following features require MQ to be installed:
 - Record and replay
 - Event-driven processing nodes (aggregate, collector, sequence, resequence, and timeout nodes)
 - FTEInput and FTEOutput nodes
 - CDInput and CDOOutput nodes
 - Integration nodes with HTTP listeners
 - High availability configurations
- **MQ Telemetry Transport**
- **Shared Libraries**
- **Increased Debugging with Flow Exerciser**

Benefits to decoupling MQ from IIB

- Easier to administer
- Better system architecture
- Reduces MQ Footprint
- More flexibility
- Cloud thinking



MQ Hardware Appliance

- **Out-Of-The-Box Speed**
- **Increased Flexibility**
- **Single Source of Support**
- **Improved Security**
- **Improved High Availability**

Simplicity

IBM Integration

Welcome, wmbadmin1

Integration Node - IIB9BRK1

Overview Statistics

Quick View

Broker Name	IIB9BRK1
Version	9000
Admin Security	On
Run Mode	running
Short Description	
Long Description	

Advanced Properties

Platform Name	Windows 7 Professional
Fixpack Capability	unrestricted
Operation Mode	advanced

Reply

External Connectivity

- External Endpoint Framework
- IIB Industry Packs
- JavaScript API support
- WebSphere eXtreme Scale Enterprise Data Grid
- Microsoft SQL Server Support
- Enhanced SOAP and HTTP Node Security

Graphical Data Mapping Enhancements

- UDE not in XML Schema
- JSON messages
- Oracle Stored Procedures

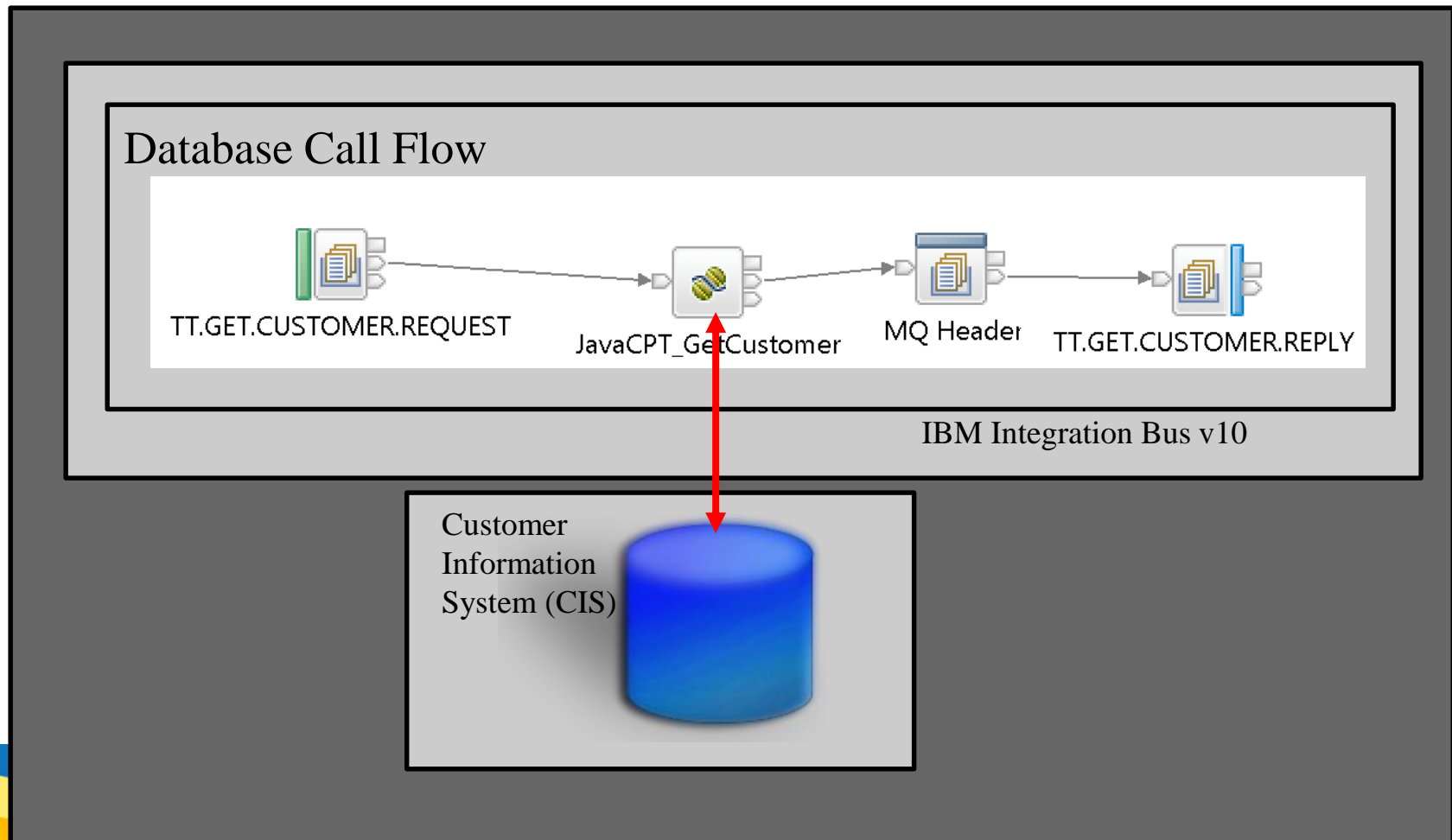
More Additions

- **Enhanced Trace Node**
- **GITHub Integration for Patterns**
- **Automatic WebSphere ESB Conversions**

Demo!

On Premises Existing Backend Flow

GetCustomer

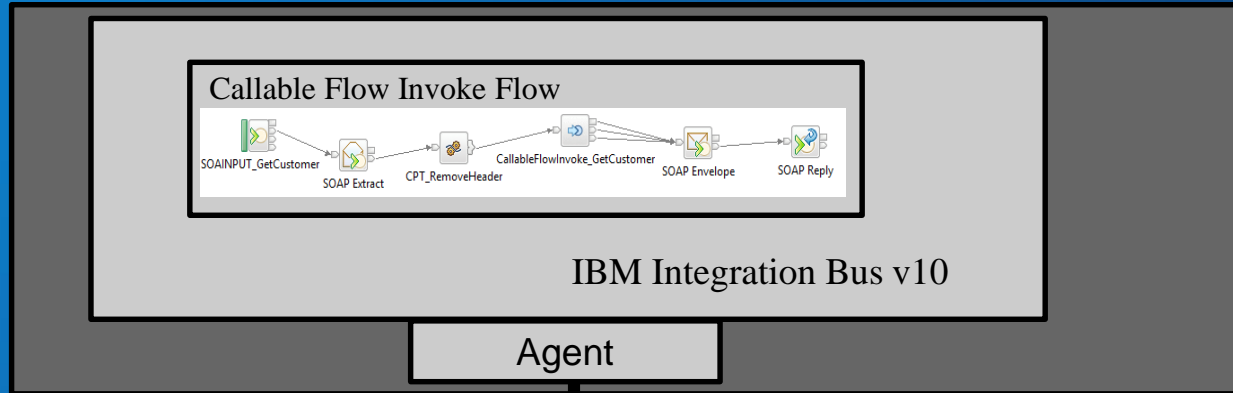


Hybrid Cloud Integration Scenario (GetCustomer)

Public Cloud

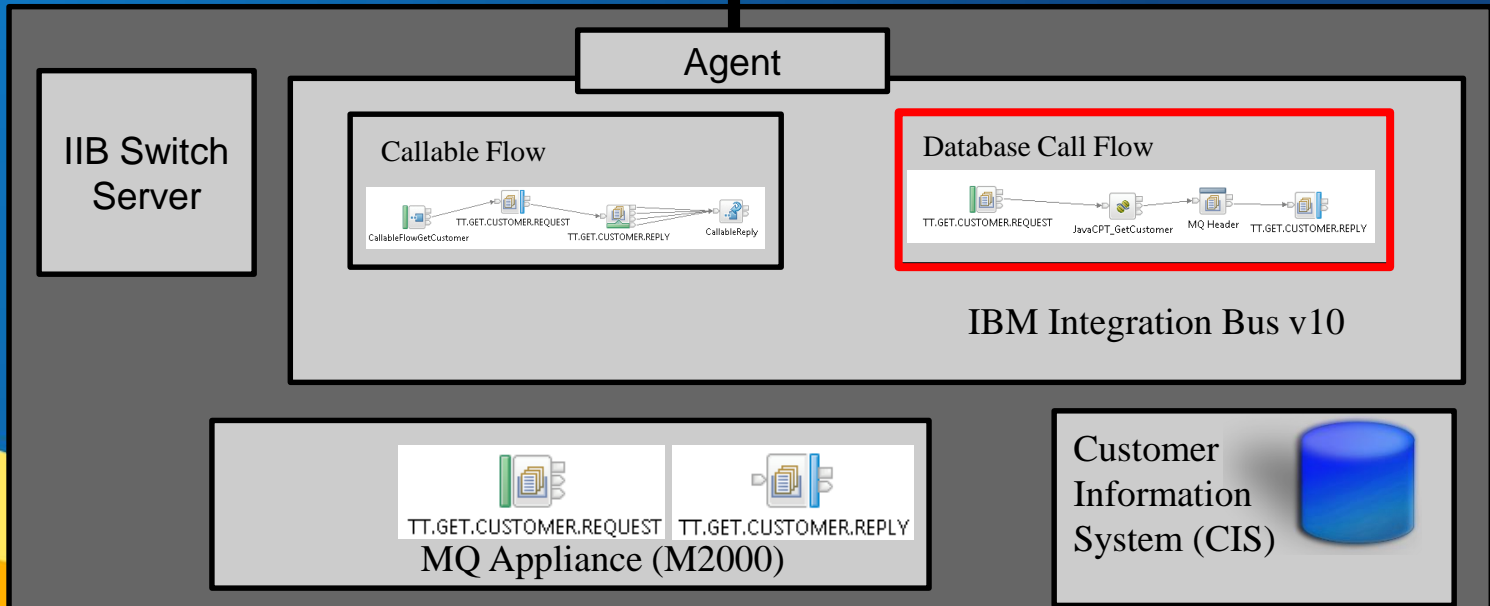


Client
(SOAPUI)



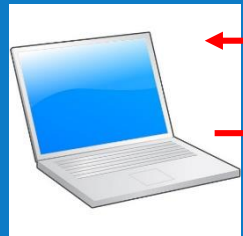
Secure
Connection

On Premise/Private Cloud
(TransformaTech DataCenter)

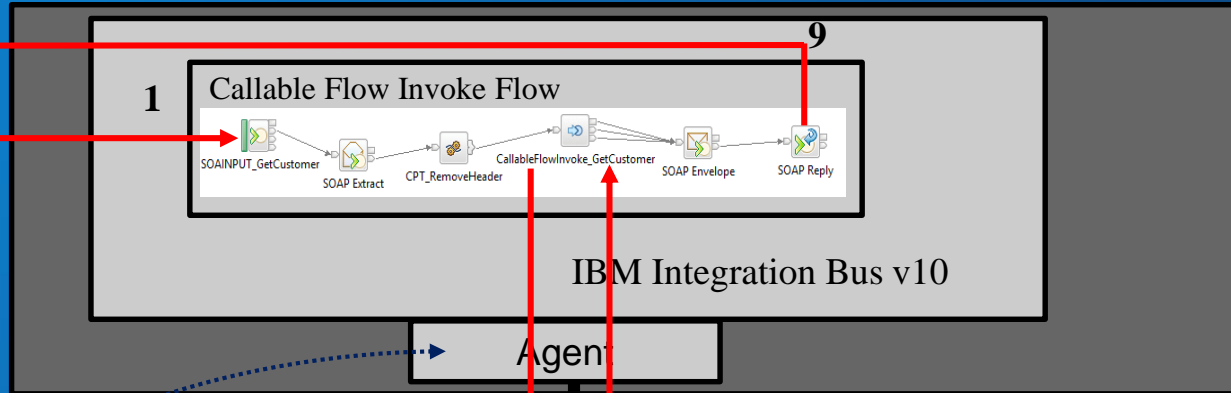


Hybrid Cloud Integration Scenario (GetCustomer)

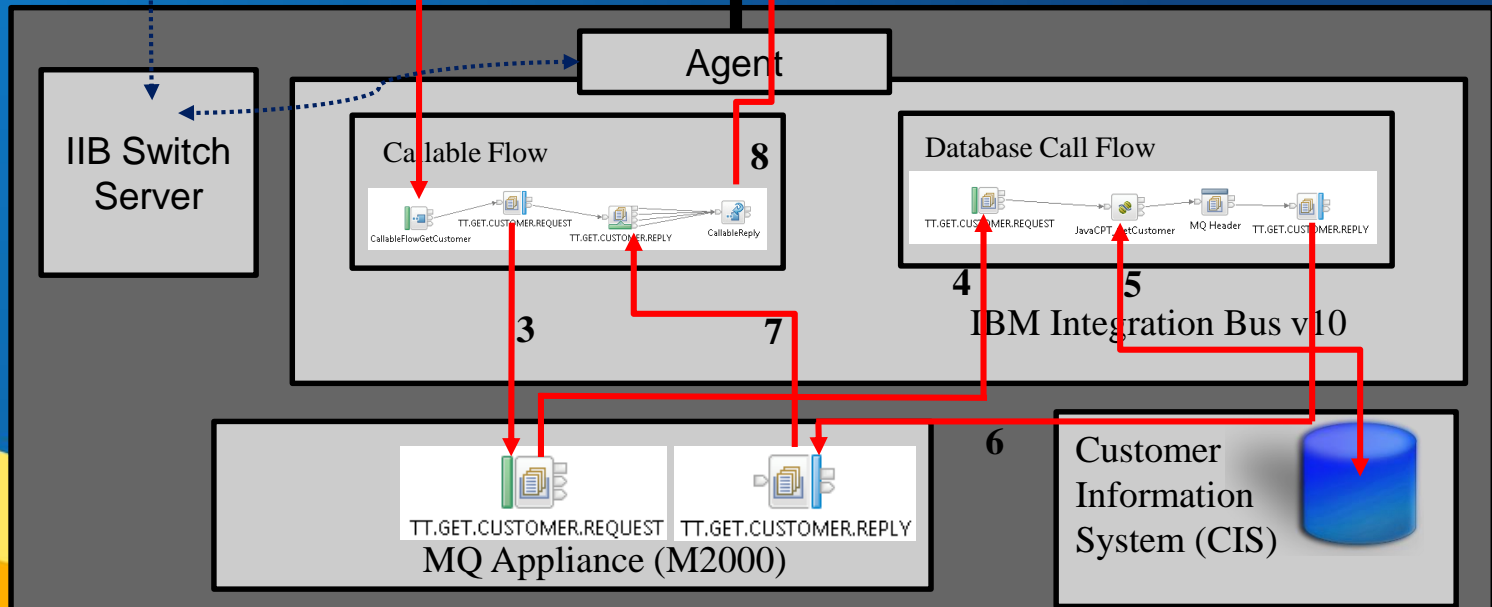
Public Cloud



Client
(SOAPUI)



On Premise/Private Cloud
(TransformaTech DataCenter)



Questions & Answers

